

OFFICIAL NCAA BASKETBALL BOX SCORE: \*\*\* FINAL \*\*\*

Date: 08-21-90 Site: Boys Sweet 16, Louisville

VISITORS (Last Name, First)

| NO.                                | Player          | FG | FGA | FT | FTA | REB | PF | TP | A  | TO | BLK | S  | TIME  |
|------------------------------------|-----------------|----|-----|----|-----|-----|----|----|----|----|-----|----|-------|
| 123                                | Cole, Chris     | 4  | 7   | 0  | 1   | 1   | 2  | 2  | 5  | 7  | 4   | 9  | 21:14 |
| 135                                | Leggs, Kent     | 4  | 17  | 2  | 7   | 1   | 3  | 1  | 4  | 5  | 3   | 11 | 26:58 |
| 144                                | Tyler, Jerome   | 6  | 10  | 0  | 0   | 1   | 2  | 5  | 8  | 13 | 3   | 13 | 30:36 |
| 121                                | Jackson, Dee    | 2  | 9   | 1  | 5   | 2   | 2  | 2  | 4  | 6  | 2   | 7  | 25:40 |
| 122                                | McKnight, Paul  | 6  | 14  | 2  | 3   | 0   | 1  | 1  | 5  | 6  | 3   | 14 | 30:47 |
| 110                                | Mason, Norman   | 1  | 4   | 0  | 1   | 0   | 0  | 1  | 0  | 1  | 1   | 2  | 9:13  |
| 130                                | Woodfork, M.    | 1  | 4   | 0  | 0   | 0   | 0  | 1  | 1  | 2  | 2   | 1  | 10:15 |
| 150                                | Davis, Xavier   | 1  | 1   | 0  | 0   | 0   | 0  | 1  | 1  | 2  | 2   | 1  | 3:32  |
| 124                                | Warren, Michael | 0  | 0   | 0  | 0   | 0   | 0  | 0  | 0  | 1  | 1   | 0  | 0:17  |
| 132                                | Young, Chris    | 0  | 0   | 0  | 0   | 0   | 0  | 0  | 0  | 1  | 1   | 0  | 0:17  |
| 151                                | Dumas, Eric     | 0  | 0   | 0  | 0   | 0   | 0  | 0  | 0  | 0  | 0   | 0  | 0:17  |
| TEAM REBOUNDS (INCLUDED IN TOTALS) |                 |    |     |    |     |     |    |    |    |    |     |    | 1     |
| TOTALS                             |                 | 25 | 66  | 5  | 17  | 5   | 10 | 14 | 30 | 44 | 21  | 60 | 159   |

Percentages: Game----- FG 25/66 37.9% 3-PT. 5/17 29.4% FT 5/10 50.0%

| Period | FG         | 3-PT.     | FT        |
|--------|------------|-----------|-----------|
| 1      | 6/22 27.3% | 1/2 50.0% | 2/3 66.7% |
| 2      | 7/15 46.7% | 1/5 20.0% | 1/2 50.0% |
| 3      | 7/17 41.2% | 0/5 0.0%  | 0/0 0.0%  |
| 4      | 5/12 41.7% | 3/5 60.0% | 2/5 40.0% |

HOME (Last Name, First)

| NO.                                | Player          | FG | FGA | FT | FTA | REB | PF | TP | A  | TO | BLK | S  | TIME  |
|------------------------------------|-----------------|----|-----|----|-----|-----|----|----|----|----|-----|----|-------|
| 130                                | Burton, Kevin   | 3  | 12  | 0  | 4   | 3   | 4  | 0  | 4  | 4  | 3   | 9  | 28:32 |
| 152                                | Bingham, Paul   | 9  | 21  | 0  | 0   | 4   | 9  | 4  | 11 | 15 | 3   | 22 | 32:00 |
| 150                                | Peel, Keith     | 8  | 13  | 0  | 0   | 6   | 7  | 4  | 10 | 14 | 2   | 22 | 31:43 |
| 120                                | Cunningham, Les | 1  | 5   | 0  | 0   | 0   | 2  | 0  | 2  | 2  | 3   | 2  | 32:00 |
| 131                                | Holtmann, Chris | 8  | 13  | 0  | 0   | 0   | 1  | 3  | 2  | 5  | 3   | 16 | 32:00 |
| 132                                | Ferguson, Lance | 0  | 1   | 0  | 0   | 0   | 0  | 0  | 0  | 0  | 0   | 0  | 3:28  |
| 142                                | Hafley, Tim     | 0  | 0   | 0  | 0   | 0   | 0  | 0  | 0  | 0  | 0   | 0  | 0:17  |
| TEAM REBOUNDS (INCLUDED IN TOTALS) |                 |    |     |    |     |     |    |    |    |    |     |    | 1     |
| TOTALS                             |                 | 29 | 65  | 0  | 4   | 13  | 23 | 13 | 31 | 44 | 14  | 71 | 160   |

Percentages: Game----- FG 29/65 44.6% 3-PT. 0/4 0.0% FT 13/23 56.5%

| Period | FG          | 3-PT.    | FT         |
|--------|-------------|----------|------------|
| 1      | 5/17 29.4%  | 0/1 0.0% | 4/6 66.7%  |
| 2      | 6/14 42.9%  | 0/2 0.0% | 3/6 50.0%  |
| 3      | 8/15 53.3%  | 0/0 0.0% | 0/0 0.0%   |
| 4      | 10/19 52.6% | 0/1 0.0% | 6/11 54.5% |

OFFICIALS: Yvon Allen, Dwight Gordon, Alt.-J. Davis

Technical: None

SCORE BY PERIODS

| Team             | 1  | 2  | 3  | 4  | Total |
|------------------|----|----|----|----|-------|
| Paducah Tilghman | 15 | 16 | 14 | 15 | 60    |
| Jessamine County | 14 | 15 | 16 | 26 | 71    |

Attendance: 14,780

COMMENTS: POINTS OFF TURNOVERS

Paducah Tilghman 11 Jessamine County

SECOND CHANCE POINTS

19 Paducah Tilghman 11 Jessamine County 10

Produced by the K.H.S.A.A. Stat Crew with FINAL III - a Product of LEXICOM SPORTS(Inc)

BOX SCORE: \*\*\* FINAL \*\*\*

Date: 03-21-90 Site: Boys Sweet 16, Louisville Attendance: 14,780

Team: Paducah Tilghman

| NO.    | NAME            | TOTAL FG |        | 3-POINT |     | FT | FTA | REB |    |    | PF | TP | A | TO | BLK   | S | TIME |
|--------|-----------------|----------|--------|---------|-----|----|-----|-----|----|----|----|----|---|----|-------|---|------|
|        |                 | FG       | FGA    | FG      | FGA |    |     | O   | D  | T  |    |    |   |    |       |   |      |
| 23     | Cole, Chris     | 4 / 7    | 0 / 1  | 1       | 2   | 2  | 5   | 7   | 4  | 9  | 2  | 2  | 0 | 1  | 21:14 |   |      |
| 35     | Leggs, Kent     | 4 / 17   | 2 / 7  | 1       | 3   | 1  | 4   | 5   | 3  | 11 | 0  | 2  | 0 | 3  | 26:58 |   |      |
| 44     | Tyler, Jerome   | 6 / 10   | 0 / 0  | 1       | 2   | 5  | 8   | 13  | 3  | 13 | 0  | 2  | 1 | 1  | 30:36 |   |      |
| 21     | Jackson, Dee    | 2 / 9    | 1 / 5  | 2       | 2   | 2  | 4   | 6   | 2  | 7  | 3  | 1  | 0 | 3  | 25:40 |   |      |
| 22     | McKnight, Paul  | 6 / 14   | 2 / 3  | 0       | 1   | 1  | 5   | 6   | 3  | 14 | 0  | 6  | 0 | 2  | 30:47 |   |      |
| 10     | Mason, Norman   | 1 / 4    | 0 / 1  | 0       | 0   | 1  | 0   | 1   | 1  | 2  | 3  | 7  | 0 | 0  | 9:13  |   |      |
| 30     | Woodfork, M.    | 1 / 4    | 0 / 0  | 0       | 0   | 0  | 1   | 1   | 2  | 2  | 0  | 0  | 0 | 0  | 10:15 |   |      |
| 50     | Davis, Xavier   | 1 / 1    | 0 / 0  | 0       | 0   | 1  | 1   | 2   | 2  | 2  | 0  | 1  | 0 | 0  | 3:32  |   |      |
| 24     | Warren, Michael | 0 / 0    | 0 / 0  | 0       | 0   | 0  | 0   | 0   | 1  | 0  | 0  | 0  | 0 | 0  | 0:19  |   |      |
| 32     | Young, Chris    | 0 / 0    | 0 / 0  | 0       | 0   | 0  | 1   | 1   | 0  | 0  | 0  | 1  | 0 | 0  | 0:17  |   |      |
| 51     | Dumas, Eric     | 0 / 0    | 0 / 0  | 0       | 0   | 0  | 0   | 0   | 0  | 0  | 0  | 0  | 0 | 0  | 0:17  |   |      |
| TEAM   |                 |          |        |         |     |    | 1   | 1   | 2  |    |    |    |   |    |       |   |      |
| TOTALS |                 | 25 / 66  | 5 / 17 | 5       | 10  | 14 | 30  | 44  | 21 | 60 | 8  | 22 | 1 | 10 | 159   |   |      |

| Percentages: | Game----- | FG    | 25/ 66 | 37.9% | 3-PT. | 5/ 17 | 29.4% | FT | 5/ 10 | 50.0% |
|--------------|-----------|-------|--------|-------|-------|-------|-------|----|-------|-------|
| Period 1     |           | 6/ 22 | 27.3%  | 1/ 2  | 50.0% | 2/ 3  | 66.7% |    |       |       |
| Period 2     |           | 7/ 15 | 46.7%  | 1/ 5  | 20.0% | 1/ 2  | 50.0% |    |       |       |
| Period 3     |           | 7/ 17 | 41.2%  | 0/ 5  | 0.0%  | 0/ 0  | 0.0%  |    |       |       |
| Period 4     |           | 5/ 12 | 41.7%  | 3/ 5  | 60.0% | 2/ 5  | 40.0% |    |       |       |

Team: Jessamine County

| NO.    | NAME            | TOTAL FG |       | 3-POINT |     | FT | FTA | REB |    |    | PF | TP | A | TO | BLK   | S | TIME |
|--------|-----------------|----------|-------|---------|-----|----|-----|-----|----|----|----|----|---|----|-------|---|------|
|        |                 | FG       | FGA   | FG      | FGA |    |     | O   | D  | T  |    |    |   |    |       |   |      |
| 30     | Burton, Kevin   | 3 / 12   | 0 / 4 | 3       | 4   | 0  | 4   | 4   | 3  | 9  | 1  | 3  | 0 | 1  | 28:32 |   |      |
| 52     | Bingham, Paul   | 9 / 21   | 0 / 0 | 4       | 9   | 4  | 11  | 15  | 3  | 22 | 0  | 0  | 1 | 2  | 32:00 |   |      |
| 50     | Peel, Keith     | 8 / 13   | 0 / 0 | 6       | 7   | 4  | 10  | 14  | 2  | 22 | 0  | 1  | 2 | 3  | 31:43 |   |      |
| 20     | Cunningham, Les | 1 / 5    | 0 / 0 | 0       | 2   | 0  | 2   | 2   | 3  | 2  | 8  | 7  | 0 | 1  | 32:00 |   |      |
| 31     | Holtmann, Chris | 8 / 13   | 0 / 0 | 0       | 1   | 3  | 2   | 5   | 3  | 16 | 3  | 4  | 0 | 2  | 32:00 |   |      |
| 32     | Ferguson, Lance | 0 / 1    | 0 / 0 | 0       | 0   | 0  | 0   | 0   | 0  | 0  | 0  | 1  | 0 | 0  | 3:28  |   |      |
| 42     | Hafley, Tim     | 0 / 0    | 0 / 0 | 0       | 0   | 0  | 0   | 0   | 0  | 0  | 0  | 0  | 0 | 0  | 0:17  |   |      |
| TEAM   |                 |          |       |         |     |    | 2   | 2   | 4  |    |    |    |   |    |       |   |      |
| TOTALS |                 | 29 / 65  | 0 / 4 | 13      | 23  | 13 | 31  | 44  | 14 | 71 | 12 | 16 | 3 | 9  | 160   |   |      |

| Percentages: | Game----- | FG     | 29/ 65 | 44.6% | 3-PT. | 0/ 4  | 0.0%  | FT | 13/ 23 | 56.5% |
|--------------|-----------|--------|--------|-------|-------|-------|-------|----|--------|-------|
| Period 1     |           | 5/ 17  | 29.4%  | 0/ 1  | 0.0%  | 4/ 6  | 66.7% |    |        |       |
| Period 2     |           | 6/ 14  | 42.9%  | 0/ 2  | 0.0%  | 3/ 6  | 50.0% |    |        |       |
| Period 3     |           | 8/ 15  | 53.3%  | 0/ 0  | 0.0%  | 0/ 0  | 0.0%  |    |        |       |
| Period 4     |           | 10/ 19 | 52.6%  | 0/ 1  | 0.0%  | 6/ 11 | 54.5% |    |        |       |

OFFICIALS: Yvon Allen, Dwight Gordon, Alt.-J. Davis

SCORE BY PERIODS

Technical: None

|                  |    |    |    |    |   |    |
|------------------|----|----|----|----|---|----|
| Paducah Tilghman | 15 | 16 | 14 | 15 | = | 60 |
| Jessamine County | 14 | 15 | 16 | 26 | = | 71 |

BOX SCORE: \* OFFICIAL FIRST HALF \* Date: 03-21-90 Site: Boys Sweet 16, Louisville Attendance:

Team: Paducah Tilghman

| NO.          | NAME           | TOTAL FG  |     | 3-POINT |        | FT    | FTA   | REB  |       |    | PF   | TP    | A | TO | BLK | S | TIME  |
|--------------|----------------|-----------|-----|---------|--------|-------|-------|------|-------|----|------|-------|---|----|-----|---|-------|
|              |                | FG        | FGA | FG      | FGA    |       |       | O    | D     | T  |      |       |   |    |     |   |       |
| 23           | Cole, Chris    | 1         | 3   | 0       | 0      | 0     | 0     | 0    | 1     | 1  | 2    | 2     | 1 | 1  | 0   | 0 | 5:33  |
| 35           | Leggs, Kent    | 2         | 8   | 1       | 4      | 0     | 1     | 1    | 2     | 3  | 1    | 5     | 0 | 0  | 0   | 2 | 13:24 |
| 44           | Tyler, Jerome  | 4         | 8   | 0       | 0      | 1     | 1     | 3    | 5     | 8  | 1    | 9     | 0 | 2  | 0   | 1 | 16:00 |
| 21           | Jackson, Dee   | 0         | 4   | 0       | 1      | 2     | 2     | 1    | 3     | 4  | 1    | 2     | 2 | 0  | 0   | 1 | 11:31 |
| 22           | McKnight, Paul | 3         | 8   | 1       | 1      | 0     | 1     | 1    | 3     | 4  | 1    | 7     | 0 | 1  | 0   | 0 | 16:00 |
| 10           | Mason, Norman  | 1         | 4   | 0       | 1      | 0     | 0     | 1    | 0     | 1  | 1    | 2     | 3 | 5  | 0   | 0 | 8:00  |
| 30           | Woodfork, M.   | 1         | 1   | 0       | 0      | 0     | 0     | 0    | 1     | 1  | 1    | 2     | 0 | 0  | 0   | 0 | 5:08  |
| 50           | Davis, Xavier  | 1         | 1   | 0       | 0      | 0     | 0     | 1    | 1     | 2  | 2    | 2     | 0 | 1  | 0   | 0 | 3:32  |
| TEAM         |                |           |     |         |        |       |       | 1    | 1     | 2  |      |       |   |    |     |   |       |
| TOTALS       |                | 13        | 37  | 2       | 7      | 3     | 5     | 9    | 17    | 26 | 10   | 31    | 6 | 10 | 0   | 4 | 79    |
| Percentages: |                | HALF----- |     | FG      | 13/ 37 | 35.1% | 3-PT. | 2/ 7 | 28.6% | FT | 3/ 5 | 60.0% |   |    |     |   |       |
|              |                | Period 1  |     |         | 6/ 22  | 27.3% |       | 1/ 2 | 50.0% |    | 2/ 3 | 66.7% |   |    |     |   |       |
|              |                | Period 2  |     |         | 7/ 15  | 46.7% |       | 1/ 5 | 20.0% |    | 1/ 2 | 50.0% |   |    |     |   |       |

Team: Jessamine County

| NO.          | NAME            | TOTAL FG  |     | 3-POINT |        | FT    | FTA   | REB  |      |    | PF    | TP    | A | TO | BLK | S | TIME  |
|--------------|-----------------|-----------|-----|---------|--------|-------|-------|------|------|----|-------|-------|---|----|-----|---|-------|
|              |                 | FG        | FGA | FG      | FGA    |       |       | O    | D    | T  |       |       |   |    |     |   |       |
| 30           | Burton, Kevin   | 0         | 4   | 0       | 3      | 1     | 2     | 0    | 3    | 3  | 1     | 1     | 0 | 2  | 0   | 0 | 16:00 |
| 52           | Bingham, Paul   | 2         | 10  | 0       | 0      | 1     | 3     | 1    | 5    | 6  | 2     | 5     | 0 | 0  | 1   | 1 | 16:00 |
| 50           | Peel, Keith     | 4         | 6   | 0       | 0      | 5     | 6     | 4    | 4    | 8  | 1     | 13    | 0 | 0  | 1   | 1 | 16:00 |
| 20           | Cunningham, Les | 1         | 4   | 0       | 0      | 0     | 1     | 0    | 2    | 2  | 2     | 2     | 2 | 5  | 0   | 0 | 16:00 |
| 31           | Holtmann, Chris | 4         | 7   | 0       | 0      | 0     | 0     | 2    | 1    | 3  | 1     | 8     | 0 | 2  | 0   | 0 | 16:00 |
| TEAM         |                 |           |     |         |        |       |       |      | 1    | 1  |       |       |   |    |     |   |       |
| TOTALS       |                 | 11        | 31  | 0       | 3      | 7     | 12    | 7    | 16   | 23 | 7     | 29    | 2 | 9  | 2   | 2 | 80    |
| Percentages: |                 | HALF----- |     | FG      | 11/ 31 | 35.5% | 3-PT. | 0/ 3 | 0.0% | FT | 7/ 12 | 58.3% |   |    |     |   |       |
|              |                 | Period 1  |     |         | 5/ 17  | 29.4% |       | 0/ 1 | 0.0% |    | 4/ 6  | 66.7% |   |    |     |   |       |
|              |                 | Period 2  |     |         | 6/ 14  | 42.9% |       | 0/ 2 | 0.0% |    | 3/ 6  | 50.0% |   |    |     |   |       |

OFFICIALS: Yvon Allen, Dwight Gordon, Alt.-J. Davis

Technicals: None

SCORE BY PERIODS

Paducah Tilghman 15 16 = 31  
 Jessamine County 14 15 = 29

††

Paducah Tilghman "Tornado" vs Jessamine County "Colts"

1st Half Play by Play  
 Player Team Jessamine County

Burton, Kevin, Bingham, Paul, Peel, Keith, Cunningham, Les, Holtmann, Chris  
 Ball to Colts  
 1-1 100X 1-2 50.0X Driving Layup by Holtmann, Chris  
 1  
 1-2 50.0X 2-3 66.6X Foul on Bingham, Paul  
 Driving Layup by Bingham, Paul  
 1  
 2 Foul on Cunningham, Les  
 1- 2 50.0X 1- 2 50.0X Burton, Kevin 2 Free Throws - made 1st missed 2nd  
 2-3 66.6X 3-6 50.0X 14 ft Lane Jump shot by Holtmann, Chris  
 2 3 Foul on Cunningham, Les  
 1 4 Foul on Peel, Keith  
 1- 1 100X 2- 3 66.6X Peel, Keith 1 Free Throw - made  
 1-1 100X 4-10 40.0X 17 ft Left Angle Jump shot by Cunningham, Les  
 2- 2 100X 3- 4 75.0X Peel, Keith 1 Free Throw - made  
 3-5 60.0X 5-12 41.6X 9 ft Right Side Driving by Holtmann, Chris  
 1 5 Foul on Burton, Kevin

REB: 11 A: 0 BLK: 2 TO: 5 PF: 5  
 S: 0 FT: 3-4 75.0X FG: 5-12 41.6X

1- 2 50.0X 4- 6 66.6X Bingham, Paul 2 Free Throws - made 1st missed 2nd

PAGE : 1  
 Time Score

Tip off at 1:00 on 03/21/90 at Boys Sweet 16, Louisville  
 Produced by the K.H.S.A.A. Stat Crew with FINAL III - a Product of LEXICON SPORTS INC

Paducah Tilghman Player Team

Cole, Chris, Leggs, Kent, Tyler, Jerome, Jackson, Dee, McKnight, Paul  
 10 ft Left Side Jump shot by Cole, Chris 1-1 100X 1-3 33.3X  
 6 ft Left Side Follow by Leggs, Kent 1-2 50.0X 2-10 20.0X  
 Foul on Cole, Chris 1 1  
 Driving Layup by Tyler, Jerome Assist by Cole, Chris 1-3 33.3X 3-13 23.0X  
 1  
 Jackson, Dee 2 Free Throws - made both 2- 2 100X 2- 2 100X  
 Foul on Cole, Chris 2 2  
 Foul on McKnight, Paul 1 3  
 Sub In: Mason, Norman Out: Jackson, Dee  
 Sub In: Woodfork, M. Out: Cole, Chris  
 Driving Layup by Woodfork, M. Assist by Mason, Norman 1-1 100X 4-18 22.2X  
 Leggs, Kent 1 & Bonus - missed 1st 0- 1 00.0X 2- 3 66.6X  
 Foul on Leggs, Kent 1 4  
 Foul on Mason, Norman 1 5  
 Driving Layup by Tyler, Jerome Assist by Mason, Norman 2-5 40.0X 5-20 25.0X  
 Sub In: Jackson, Dee Out: Leggs, Kent 2 3  
 3 pt 22 ft Left Angle Jump shot by McKnight, Paul 1-6 16.6X 6-22 27.2X

1 1:05  
 TIME - O U T Paducah Tilghman No. 1

REB: 12 A: 2 BLK: 0 TO: 2 PF: 3  
 S: 3 FT: 2-3 66.6X FG: 4-19 21.0X

Paducah Tilghman "Tornado" vs Jessamine County "Colts"

1st Half Play by Play  
 Player Team Jessamine County

Burton, Kevin, Bingham, Paul, Peel, Keith, Cunningham, Les, Holtmann, Chris  
 Ball to Colts

1- 3 33.3% 4- 7 57.1% Bingham, Paul 1 & Bonus - missed 1st

2 6 Foul on Bingham, Paul

2-8 25.0% 6-19 31.5% Driving Layup by Bingham, Paul  
 1 1 Assist by Cunningham, Les

1-3 33.3% 7-21 33.3% Follow Dunk by Peel, Keith

4- 4 100% 6- 9 66.6% Peel, Keith 2 Free Throws - made both

REB: 17 A: 1 BLK: 2 TO: 8 PF: 6  
 S: 2 FT: 6-9 66.6% FG: 7-23 30.4%

5- 6 83.3% 7-11 63.6% Peel, Keith 2 Free Throws - made 1st missed 2nd

4-7 57.1% 8-25 32.0% 4 ft Lane Follow by Holtmann, Chris

0- 1 00.0% 7-12 58.3% Cunningham, Les 1 & Bonus - missed 1st

2-4 50.0% 9-27 33.3% Follow Dunk by Peel, Keith

3-5 60.0% 10-28 35.7% Driving Dunk by Peel, Keith  
 2 2 Assist by Cunningham, Les

4-6 66.6% 11-30 36.6% Follow Tip by Peel, Keith

REB: 21 A: 2 BLK: 2 TO: 9 PF: 6  
 S: 2 FT: 7-12 58.3% FG: 11-30 36.6%

1 7 Foul on Holtmann, Chris

PAGE : 2  
 Time Score

Tip off at 1:00 on 03/21/90 at Boys Sweet 16, Louisville  
 Produced by the K.H.S.A.A. Stat Crew with FINAL III - a Product of LEXICON SPORTS™

Paducah Tilghman Player Team

Tyler, Jerome, Woodfork, M., Jackson, Dee, Mason, Norman, McKnight, Paul

2 7:34 Subs In: Woodfork, M., Mason, Norman  
 Out: McKnight, Paul, Leggs, Kent  
 2 7:34 Sub In: McKnight, Paul Out: Cole, Chris  
 2 7:20 Foul on Woodfork, M. 1 6

2 7:20  
 2 7:12 14-14\* Dunk Off Fast Break by Tyler, Jerome  
 Assist by Mason, Norman 3-6 50.0% 7-24 29.1%  
 3 4

2 7:12  
 2 7:12 14-15\* Tyler, Jerome 1 Free Throw - made 1- 1 100% 3- 4 75.0%  
 2 6:53 16-15

2 6:23 18-15  
 2 6:05 18-17\* Driving Layup by Mason, Norman 1-2 50.0% 8-26 30.7%  
 Assist by Jackson, Dee 1 5  
 1 7

2 5:52 Foul on Tyler, Jerome  
 2 5:52 Sub In: Leggs, Kent Out: Woodfork, M.

2 5:52 20-17  
 2 4:57 20-19\* 4 ft Lane Driving by McKnight, Paul 2-7 28.5% 9-28 32.1%  
 2 4:44 20-22\* 3 pt 22 ft Left Angle Jump shot by Leggs, Kent 2-5 40.0% 10-29 34.4%

2 4:31 REB: 21 A: 5 BLK: 0 TO: 7 PF: 7  
 No. 1 Jessamine County TIME - O U T S: 3 FT: 3-4 75.0% FG: 10-29 34.4%

2 4:31 Sub In: Davis, Xavier Out: Mason, Norman  
 2 4:13 20-27\* 6 ft Lane Follow by Davis, Xavier 1-1 100% 11-31 35.4%  
 2 3:58 Foul on Davis, Xavier 1 8

2 3:58 21-27  
 2 3:54 21-29\* Driving FINGER ROLL by Tyler, Jerome 4-7 57.1% 12-32 37.5%  
 Assist by Jackson, Dee 2 6

2 3:26 23-29  
 2 3:11 23-31\* 13 ft Right Side Jump shot by McKnight, Paul 3-8 37.5% 13-33 39.3%  
 2 2:26 Foul on Jackson, Dee 1 9  
 2 2:26 Sub In: Mason, Norman Out: Jackson, Dee

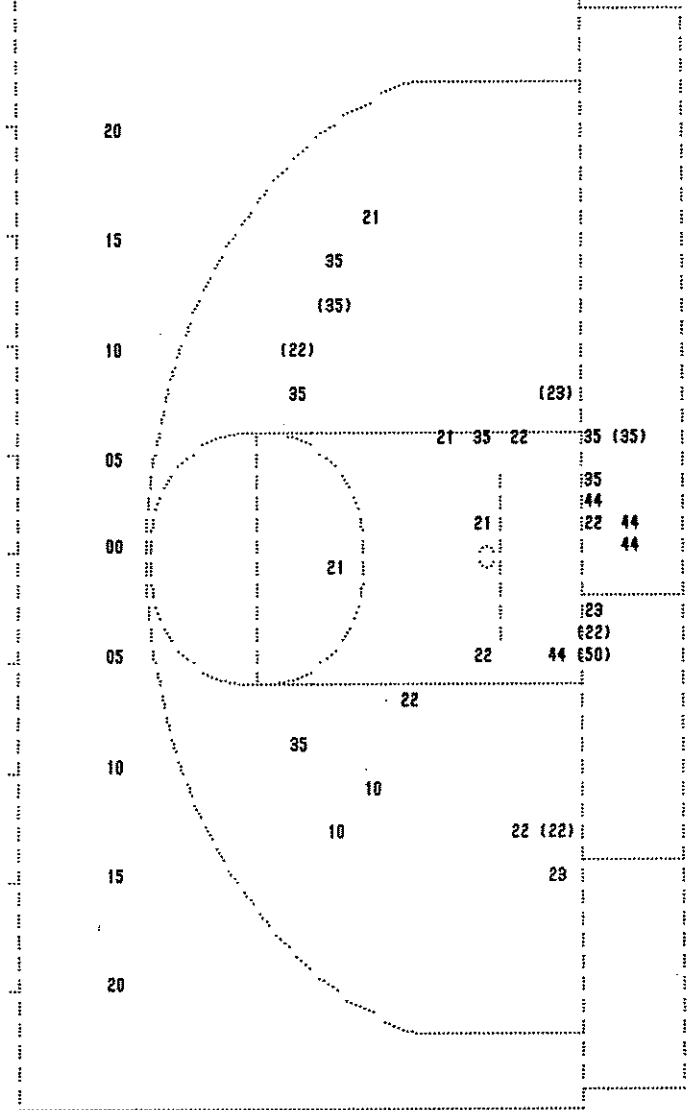
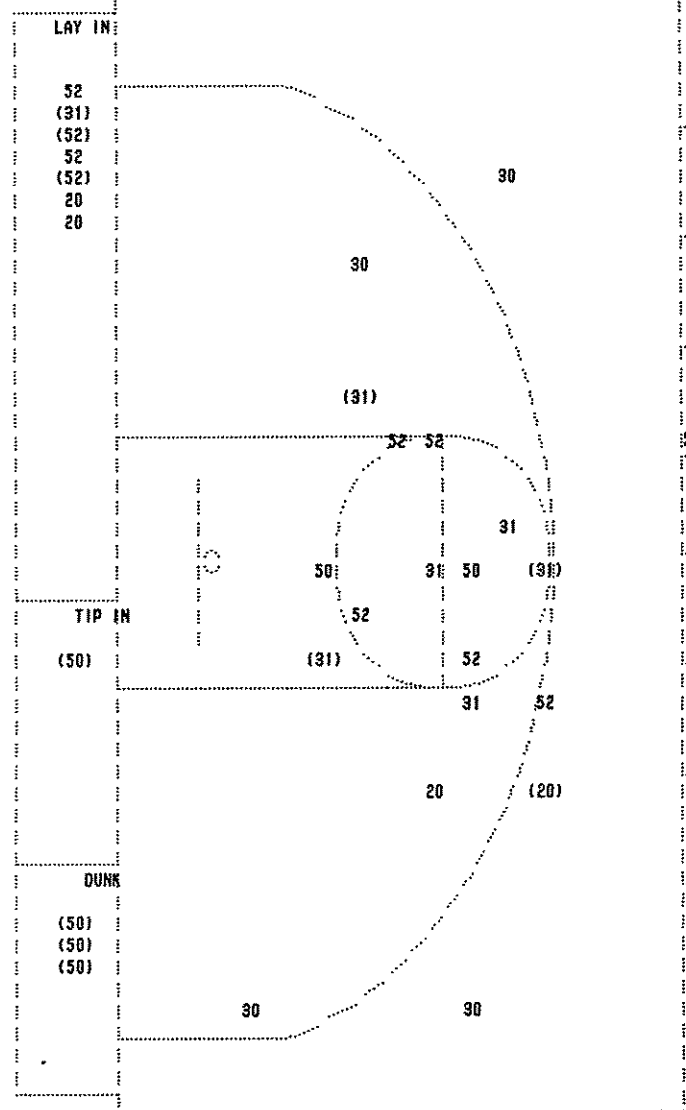
2 2:14 Foul on Davis, Xavier 2 10

2 1:58 25-31  
 2 1:27 27-31

2 1:01 29-31  
 2 0:59 Sub In: Woodfork, M. Out: Davis, Xavier

2 0:59 REB: 24 A: 6 BLK: 0 TO: 10 PF: 10  
 Paducah Tilghman No. 2 S: 4 FT: 3-4 75.0% FG: 13-34 38.2%

2 0:02 McKnight, Paul 1 & Bonus - missed 1st 0- 1 00.0% 3- 5 60.0%  
 2 0:02 3 pt 22 ft Right Angle Jump shot by  
 2 0:00 Leggs, Kent, missed 2-8 25.0% 13-37 35.1%



Paducah Tilghman "Tornado" vs Jessamine County "Colts"

2nd Half Play by Play

| Player  | Team | Jessamine County                                 |
|---|------|--|
| Burton, Kevin, Bingham, Paul, Peel, Keith, Cunningham, Les, Holtmann, Chris |      | Ball to Colts                                    |
| 5-7 71.4% 12-32 37.5%   |      | Driving Layup by Peel, Keith                     |
| 1-5 20.0% 13-33 39.3%   |      | Layup Off Fast Break by Burton, Kevin            |
| 3   | 3    | Assist by Cunningham, Les                        |
| 3   | 1    | Foul on Bingham, Paul                            |
| 2   | 2    | Foul on Burton, Kevin                            |
|   |      | Sub In: Ferguson, Lance Out: Burton, Kevin       |
| 5-9 55.5% 14-38 36.8%   |      | 4 ft Lane SHOT Off Fast Break by Holtmann, Chris |
| 6-10 60.0% 15-39 38.4%  |      | 6 ft Lane Driving by Holtmann, Chris             |
| 3-12 25.0% 16-41 39.0%  |      | 4 ft Lane Bank by Bingham, Paul                  |
| 2   | 3    | Foul on Peel, Keith                              |
| 3   | 4    | Foul on Cunningham, Les                          |
|   |      | REB: 29 A: 3 BLK: 2 TO: 13 PF: 4                 |
| S: 3  |      | FT: 7-12 58.3% FG: 16-42 38.0%                   |
|   |      | Sub In: Burton, Kevin Out: Ferguson, Lance       |
| 6-8 75.0% 17-43 39.5%   |      | Layup Off Fast Break by Peel, Keith              |
| 1   | 4    | Assist by Holtmann, Chris                        |
| 4-13 30.7% 18-44 40.9%  |      | Off the Lob Pass Layup by Bingham, Paul          |
| 1   | 5    | Assist by Burton, Kevin                          |
| 5-15 33.3% 19-46 41.3%  |      | Follow Off Fast Break by Bingham, Paul           |

PAGE : 1

Time Score

Tip off at 1:00 on 03/21/90 at Boys Sweet 16, Louisville  
Produced by the K.H.S.A.A. Stat Crew with FINAL III - a Product of LEXICON SPORTS

| Paducah Tilghman  | Player | Team  |
|---|--------|---|
| Cole, Chris, Leggs, Kent, Tyler, Jerome, Jackson, Dee, McKnight, Paul |        |   |
| 3   | 7:49   | 31-31   |
| 3   | 7:30   | 33-31   |
| 3   | 6:44   | 33-33* 12 ft Lane Jump shot by Leggs, Kent            |
| 3   | 6:16   |   |
| 3   | 5:46   |   |
| 3   | 5:46   |   |
| 3   | 5:46   | 33-35* 4 ft Lane Driving by Tyler, Jerome             |
| 3   | 5:34   | 35-35   |
| 3   | 5:32   | 35-37* 8 ft Right Side Turnaround by Cole, Chris      |
| 3   | 4:50   | 37-37   |
| 3   | 3:54   | 39-37   |
| 3   | 3:32   |   |
| 3   | 3:17   | 39-39* Follow Layup by Tyler, Jerome                  |
| 3   | 3:04   | 39-41* 10 ft Lane SHOT Off Fast Break by Jackson, Dee |
| 3   | 2:45   | 39-43* Layup Off Fast Break by McKnight, Paul         |
| 3   | 2:18   |   |
| 3   | 2:18   |   |
|   |        | REB: 32 A: 6 BLK: 0 TO: 12 PF: 0                      |
|   |        | S: 8 FT: 3-5 60.0% FG: 19-49 38.7%                    |
| 3   | 2:18   |   |
| 3   | 1:49   | 39-45* 3 ft Lane Follow by Cole, Chris                |
| 3   | 1:22   | 41-45   |
| 3   | 0:59   | Foul on Cole, Chris                                   |
| 3   | 0:59   | 43-45   |
| 3   | 0:19   | 45-45   |
| 3-5   | 60.0%  | 20-51 39.2%   |
| 3   |        | 1   |

Paducah Tilghman "Tornado" vs Jessamine County "Colts"  
2nd Half Play by Play

Tip off at 1:00 on 03/21/90 at Boys Sweet 16, Louisville  
Produced by the K.H.S.A.A. Stat Crew with FINAL III - a Product of LEXICON SPORTS

| Player        | Team          | Jessamine County                              | Time   | Score   | Paducah Tilghman  | Player                              | Team        |
|---------------|---------------|---|--------|---------|---|-------------------------------------|-------------|
| Burton, Kevin | Bingham, Paul | Peel, Keith, Cunningham, Les, Holtmann, Chris |        |         | Mason, Norman, Woodfork, M., Tyler, Jerome, Jackson, Dee, Cole, Chris |                                     |             |
| 6-16          | 37.5X         | 20-48 41.6X                                   | 4 7:39 | \$47-45 |   |                                     |             |
| 2             | 6             | Layup Off Fast Break by Bingham, Paul         |        |         |   |                                     |             |
| 2-8           | 25.0X         | 21-49 42.8X                                   | 4 7:01 | \$49-45 |   |                                     |             |
| 3             | 7             | Layup Off Fast Break by Burton, Kevin         |        |         |   |                                     |             |
| 2             | 5             | Assist by Holtmann, Chris                     |        |         |   |                                     |             |
|               |               | Foul on Holtmann, Chris                       | 4 6:47 |         |   |                                     |             |
|               |               |   | 4 6:47 |         | Sub In: McKnight, Paul  | Out: Mason, Norman                  |             |
|               |               |   | 4 6:47 |         | Sub In: Leggs, Kent   | Out: Jackson, Dee                   |             |
|               |               |   | 4 6:47 | 49-46   | Cole, Chris 2 Free Throws - made 1st missed 2nd                       | 1- 2 50.0X                          | 4- 7 57.1X  |
|               |               |   | 4 6:38 |         | Foul on McKnight, Paul  | 2                                   | 2           |
|               |               |   | 4 6:02 |         |   |                                     |             |
| 3             | 6             | Foul on Holtmann, Chris                       | 4 6:02 |         | Tyler, Jerome 1 & Bonus - missed 1st                                  | 1- 2 50.0X                          | 4- 8 50.0X  |
| 7-12          | 58.3X         | 22-52 42.3X                                   | 4 5:52 | \$51-46 |   |                                     |             |
|               |               | 8 ft Lane Driving by Holtmann, Chris          |        |         |   |                                     |             |
| 7-18          | 38.8X         | 23-55 41.8X                                   | 4 5:13 |         | Sub In: Jackson, Dee  | Out: Leggs, Kent                    |             |
| 4             | 8             | 14 ft Lane Jump shot by Bingham, Paul         |        |         |   |                                     |             |
|               |               | Assist by Cunningham, Les                     | 4 4:13 |         | Foul on Jackson, Dee  | 2                                   | 3           |
|               |               |   | 4 4:13 |         |   |                                     |             |
|               |               | REB: 38 A: 8 BLK: 3 TO: 16 PF: 6              |        |         | Paducah Tilghman No. 1  | REB: 39 A: 6 BLK: 0 TO: 19 PF: 3    |             |
|               |               | S: 7 FT: 7-12 58.3X FG: 23-56 41.0X           |        |         |   | S: 10 FT: 4-8 50.0X FG: 20-58 34.4X |             |
|               |               |   | 4 4:00 |         | Foul on Tyler, Jerome   | 2                                   | 4           |
| 8-19          | 42.1X         | 24-57 42.1X                                   | 4 4:00 |         | Sub In: Leggs, Kent   | Out: Tyler, Jerome                  |             |
| 5             | 9             | Driving Layup by Bingham, Paul                |        |         |   |                                     |             |
|               |               | Assist by Cunningham, Les                     | 4 4:00 | \$55-46 |   |                                     |             |
|               |               |   | 4 3:37 | 55-49   | 3 pt 22 ft Left Base Line Jump shot by McKnight, Paul                 | 5-12 41.6X                          | 21-59 35.5X |
| 3-11          | 27.2X         | 25-58 43.1X                                   | 4 3:27 | \$57-49 |   |                                     |             |
| 6             | 10            | Layup Off Fast Break by Burton, Kevin         |        |         |   |                                     |             |
|               |               | Assist by Cunningham, Les                     | 4 3:09 | 57-52   | 3 pt 21 ft Circle Jump shot by Leggs, Kent                            | 4-17 23.5X                          | 22-61 36.0X |
|               |               |   |        |         | Assist by Jackson, Dee  | 3                                   | 7           |
|               |               |   | 4 2:53 |         | Foul on Woodfork, M.  | 2                                   | 5           |
|               |               |   | 4 2:53 |         |   |                                     |             |
|               |               | REB: 38 A: 10 BLK: 3 TO: 16 PF: 6             |        |         | No. 2 Jessamine County  | REB: 40 A: 7 BLK: 0 TO: 19 PF: 5    |             |
|               |               | S: 7 FT: 7-12 58.3X FG: 25-58 43.1X           |        |         |   | S: 10 FT: 4-8 50.0X FG: 22-61 36.0X |             |
| 3- 5          | 60.0X         | 9-14 64.2X                                    | 4 2:53 | \$59-52 | Sub In: Tyler, Jerome   | Out: Woodfork, M.                   |             |
|               |               | Bingham, Paul 1 & Bonus - made both           |        |         |   |                                     |             |
| 8-13          | 61.5X         | 26-59 44.0X                                   | 4 2:47 | 59-54   | 18 ft Right Side Jump shot by McKnight, Paul                          | 6-13 46.1X                          | 23-62 37.0X |
| 7             | 11            | Layup Off Fast Break by Holtmann, Chris       |        |         |   |                                     |             |
|               |               | Assist by Cunningham, Les                     | 4 2:39 | \$61-54 |   |                                     |             |
| 7-12          | 58.3X         | 27-60 45.0X                                   | 4 2:28 | 61-56   | 10 ft Lane Jump shot by Cole, Chris                                   | 4-6 66.6X                           | 24-63 38.0X |
|               |               | 4 ft Lane Bank by Peel, Keith                 |        |         |   |                                     |             |
|               |               |   | 4 2:00 | \$63-56 |   |                                     |             |
|               |               |   | 4 2:00 |         | Foul on Tyler, Jerome   | 3                                   | 6           |
| 6- 7          | 85.7X         | 10-15 66.6X                                   | 4 2:00 | \$64-56 |   |                                     |             |
|               |               | Peel, Keith 1 Free Throw - made               |        |         |   |                                     |             |
| 8-13          | 61.5X         | 28-62 45.1X                                   | 4 1:18 | \$66-56 |   |                                     |             |
|               |               | Driving Layup by Peel, Keith                  |        |         |   |                                     |             |
|               |               |   | 4 1:07 | 66-59   | 3 pt 22 ft Straight Away Jump shot by Jackson, Dee                    | 2-9 22.2X                           | 25-65 38.4X |
|               |               |   |        |         | Assist by Cole, Chris   | 2                                   | 8           |
|               |               |   | 4 0:59 |         | Foul on Cole, Chris   | 4                                   | 7           |
| 4- 7          | 57.1X         | 11-17 64.7X                                   | 4 0:59 | \$67-59 |   |                                     |             |
|               |               | Bingham, Paul 1 & Bonus - made 1st missed 2nd |        |         |   |                                     |             |
|               |               |   | 4 0:50 |         | Foul on Leggs, Kent   | 2                                   | 8           |
|               |               |   | 4 0:50 |         |   |                                     |             |
|               |               | REB: 40 A: 11 BLK: 3 TO: 16 PF: 6             |        |         | Paducah Tilghman No. 2  | REB: 42 A: 8 BLK: 0 TO: 20 PF: 8    |             |
|               |               | S: 8 FT: 11-17 64.7X FG: 28-62 45.1X          |        |         |   | S: 10 FT: 4-8 50.0X FG: 25-66 37.8X |             |

T I M E - O U T

T I M E - O U T

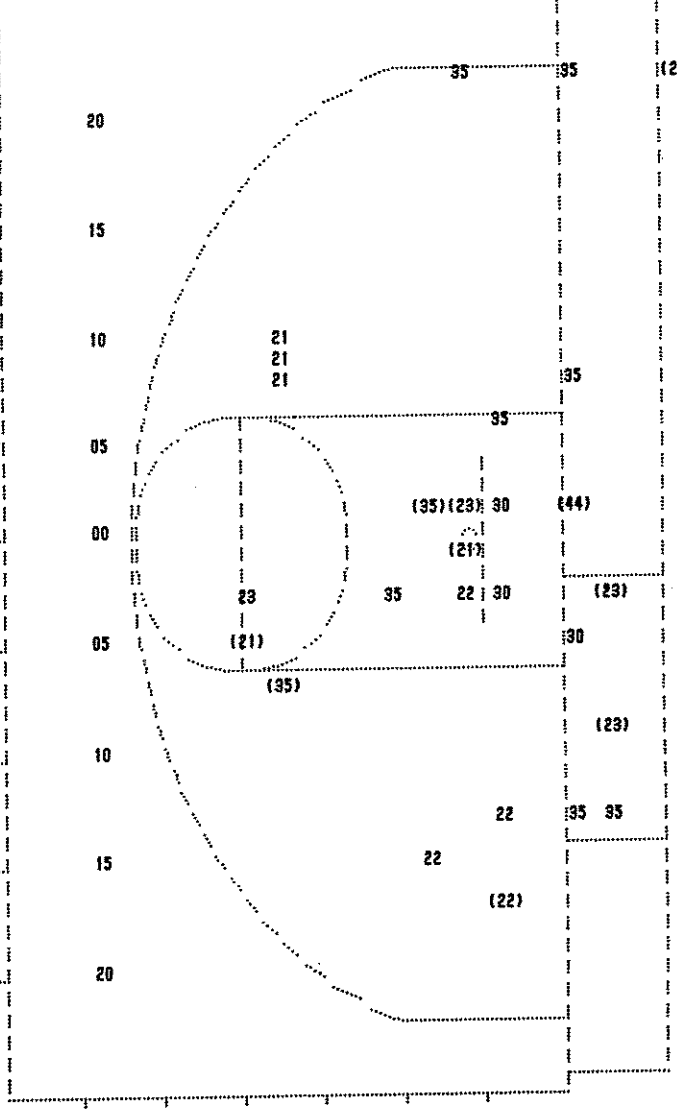
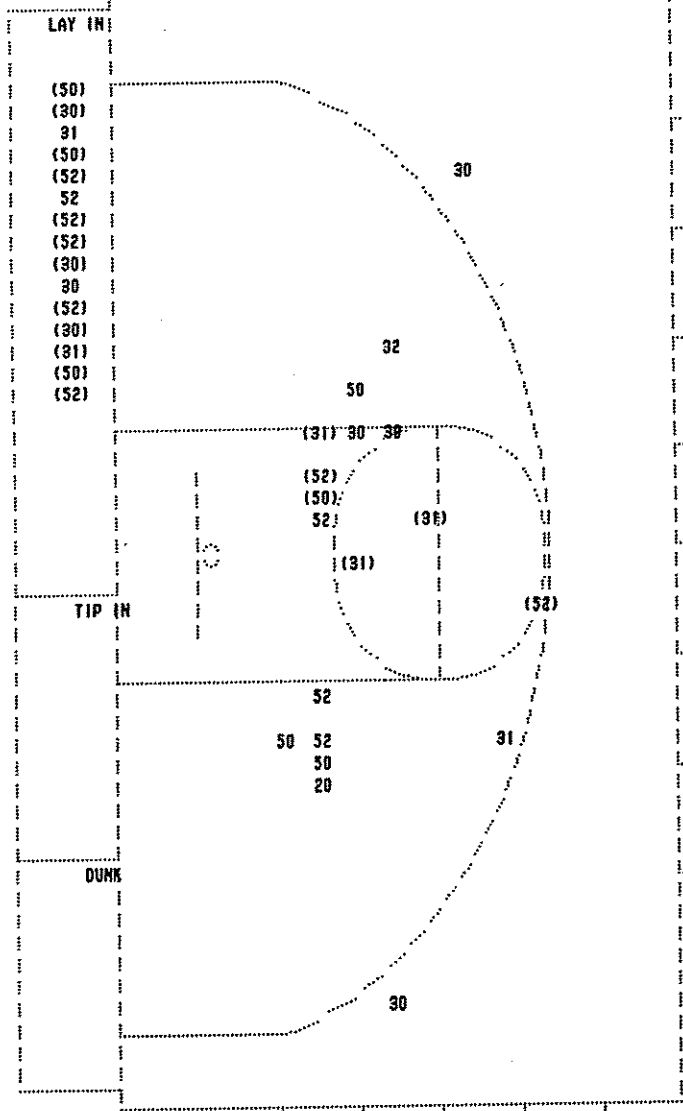
T I M E - O U T



2nd Half Play by Play (continued)

PAGE : 3

| Player    | Team       | Jessamine County   | Time   | Score  | Paducah Tilghman                                | Player | Team             |
|-----------|------------|--|--------|--------|---|--------|------------------|
| 3- 4<br>3 | 75.0X<br>7 | 13-19<br>68.4X<br>Burton, Kevin 1 & Bonus - made both<br>Foul on Burton, Kevin | 4 0:50 | 69-59  |   |        |                  |
|           |            |  | 4 0:44 |        |   |        |                  |
|           |            |  | 4 0:44 | 69-60* | Leggs, Kent 2 Free Throws - made 1st missed 2nd | 1- 3   | 33.3X 5-10 50.0X |
|           |            |  | 4 0:43 |        | Foul on Leggs, Kent                             | 3      | 9                |
| 0- 1      | 00.0X      | 13-20 65.0X Holtmann, Chris 1 & Bonus - missed 1st                             | 4 0:43 |        |   |        |                  |
|           |            |  | 4 0:19 |        | Foul on McKnight, Paul                          | 3      | 10               |
|           |            |  | 4 0:19 |        | Sub In: Warren, Michae Out: Cole, Chris         |        |                  |
| 0- 2      | 00.0X      | 13-21 61.9X Cunningham, Les 1 & Bonus - missed 1st                             | 4 0:19 |        |   |        |                  |
|           |            | Sub In: Hafley, Tim Out: Peel, Keith   | 4 0:17 |        | Foul on Warren, Michae                          | 1      | 11               |
|           |            |  | 4 0:17 |        |   |        |                  |
| 4- 9      | 44.4X      | 13-23 56.5X Bingham, Paul 2 Free Throws - missed both                          | 4 0:17 |        | Sub In: Young, Chris Out: Jackson, Dee          |        |                  |
|           |            |  | 4 0:17 |        |   |        |                  |
| 9-21      | 42.8X      | 29-65 44.8X Layup Off Fast Break by Bingham, Paul                              | 4 0:17 |        | Sub In: Dumas, Eric Out: Tyler, Jerome          |        |                  |
| 8         | 12         | Assist by Cunningham, Les  | 4 0:01 | 871-60 |   |        |                  |



| Jessamine County |        |          |                |            |       |
|------------------|--------|----------|----------------|------------|-------|
| Player           |        | Player   |                | Player     |       |
| 30 - Burton, Ke  | 3/8    | 37.5%    | 32 - Ferguson, | 0/1        | 0.0%  |
| 52 - Bingham, P  | 7/11   | 63.6%    |                |            |       |
| 50 - Peil, Keit  | 4/7    | 57.1%    |                |            |       |
| 20 - Cunningham  | 0/1    | 0.0%     |                |            |       |
| 31 - Holtmann,   | 4/6    | 66.6%    |                |            |       |
| Layups           | 1-9 Ft | 10-15 Ft | Over 15 Ft     | 3 Pointers | Total |
| 12/15            | 5/13   | 1/4      | 0/1            | 0/1        | 18/34 |
| 80.0%            | 38.5%  | 25.0%    | 0.0%           | 0.0%       | 52.9% |

| Paducah Tilghman |        |          |                |            |       |
|------------------|--------|----------|----------------|------------|-------|
| Player           |        | Player   |                | Player     |       |
| 23 - Cole, Chri  | 3/4    | 75.0%    | 30 - Woodfork, | 0/3        | 0.0%  |
| 35 - Leggs, Ken  | 2/8    | 22.2%    |                |            |       |
| 44 - Tyler, Jer  | 2/2    | 100.0%   |                |            |       |
| 21 - Jackson, D  | 2/5    | 40.0%    |                |            |       |
| 22 - McKnight,   | 3/6    | 50.0%    |                |            |       |
| Layups           | 1-9 Ft | 10-15 Ft | Over 15 Ft     | 3 Pointers | Total |
| 2/2              | 3/7    | 3/8      | 1/2            | 3/10       | 12/29 |
| 100.0%           | 42.9%  | 37.5%    | 50.0%          | 30.0%      | 41.4% |